



## JOINING INSTRUCTIONS AND DIRECTIONS

### A VERY WARM WELCOME

We are super excited that you are joining our Club. For our Agility Classes we are lucky to have the fabulous location of Hearn Field overlooking the River Teign Valley. We will be working in the field and the outside covered Gazebo area of the Pavilion. For our indoor Practical Obedience and Fit Paws classes we have the large main hall at Coombeinteignhead Village Hall and can work outside on the patio and private car park in good weather. In addition we sometimes have Agility Classes at a Menage in Stokeinteignhead or at Merryfield, Ridge Road.

### On Arrival

Take a moment to breath, savour the location and this time you are spending together.

### Checklist of Things to Bring

- Completed Membership form and payment if not already completed in advance
- Appropriate clothing and footwear (shoes with a good tread on them such as hockey boots or trail running shoes) suitable for the weather and activities.
- A torch if arriving or departing after dark (the path from the car park to the Pavilion is pebbled, but has no lights).
- A non restrictive harness if your dog has one, or a flat collar to work in and 6' lead or longer. It would also help, if you can, to have a very short piece of lead or rope that can attach to the harness or collar. (eg: 8 inches long for a large dog, or 5 inches long for a smaller dog). An old lead cut short is ideal.
- A small pot *with a lid* containing your dog's favorite treats your dog loves. We will be using the pot as a 'target' to send the dog to. (something about the size of a mobile phone or small ipad is ideal). Or a fabric treat container that can be fully sealed (eg: with velcro).
- A water bowl if you prefer not to allow your dog to share another bowl (there is a tap at the pavilion)
- One or two of your dog's favorite toys. We suggest you keep these 'special' just for training.
- By all means bring a 'clicker' if you are using one.
- A towel or blanket to kneel on for comfort during some activities.
- A kong or similar distraction you can smear with cream cheese or peanut butter to help your dog settle in class

Any questions, please text Lesley on **07958 010 401** or Peter **07958 009 235**

### **Acceptance of Risk and Club Rules**

Participation in classes is conditional upon acceptance of personal risk and club rules. While reasonable practical endeavours will be made to ensure a safe training environment, active dog training can entail a risk of injury to both handlers and dogs. In particular there is a risk of slipping or tripping on uneven or slippery surfaces and of injuries to, and by, dogs, especially while running. Participation is strictly on the

understanding that attendees expressly absolve the Club, its individual Instructors, Stewards and Helpers and the Landlords or Owners of any public or private venues of all legal and financial responsibility pertaining to their attendance at training or other Club activities. If you prefer not to take part in a particular activity please just let your instructor know.

### **Directions to Hearn Field - TQ12 4RR**

The Entrance and Car Park is not easy to spot if you don't know it. It's worth taking a look on the map beforehand to see exactly where you are heading, especially if you are arriving in the dark for the first time. The field has its own car park. If all else fails and you end up at Combe Cellars Pub you can always walk through the gap in the hedge up into Hearn Field!

Website: <http://www.haccombewithcombe.co.uk/hearn-field.php>



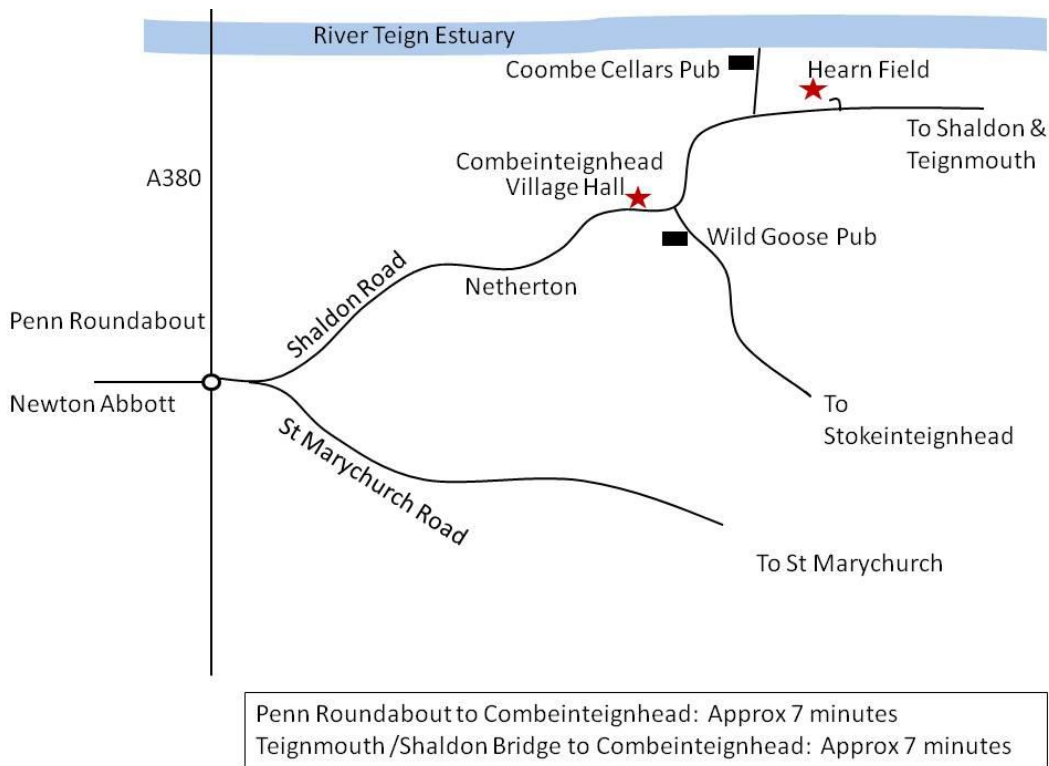
This is the entrance to Hearn Field Car park (on the left of the photo) from Combeinteignhead Village facing towards Shaldon. The tiny white sign on the fence is the Hearn Field sign. In that direction it is about 300 meters from the left fork to Combe Cellars Pub. From Ringmore it is on the right before you get to Combeinteignhead Village proper.

### **Directions to Combeinteignhead Village Hall TQ12 4RG**

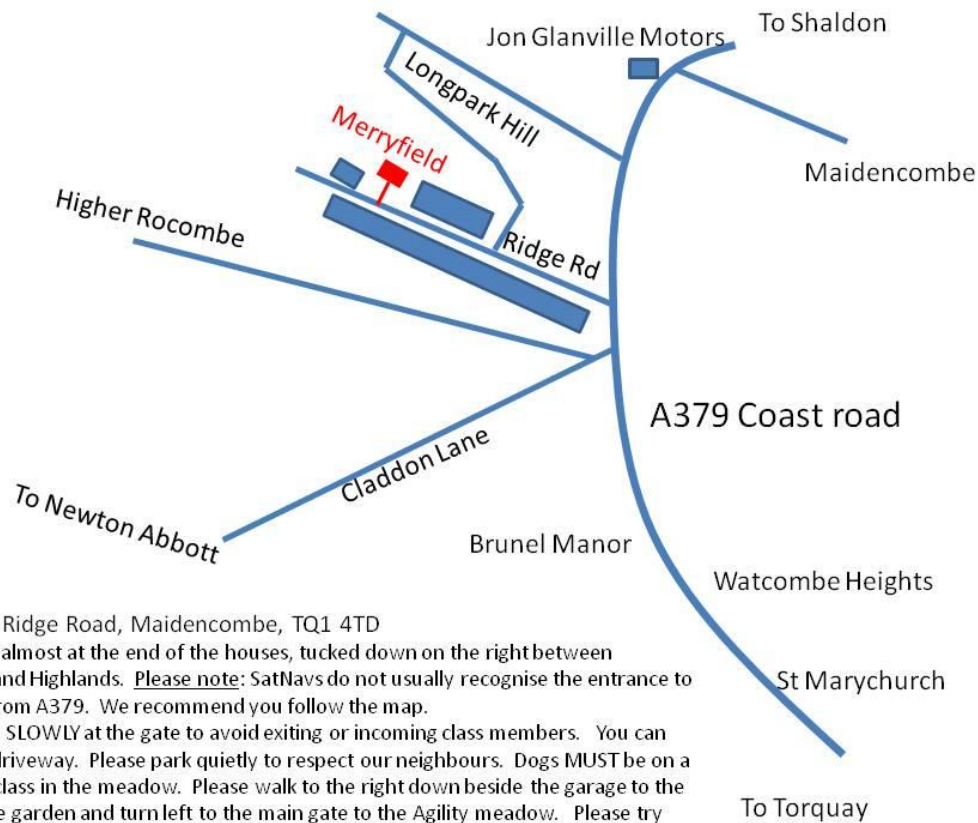
Website: <http://www.devonvillagehalls.co.uk/Combeinteignhead>



Classes are a special time for you and your dog, where we want you focusing on each other. Please have your dog on the lead from the car to the class and give them a chance to pee or poop (and pick up please!) prior to starting the class. By all means chat to other club members, that's what we are all about, but as this is all about you and your dog, please don't let them interact too much prior to class or they will tire themselves out and be more focused on their new friends. Please **do not feed** your dog a main meal prior to attending an activity class.



### Map and Directions to Merryfield



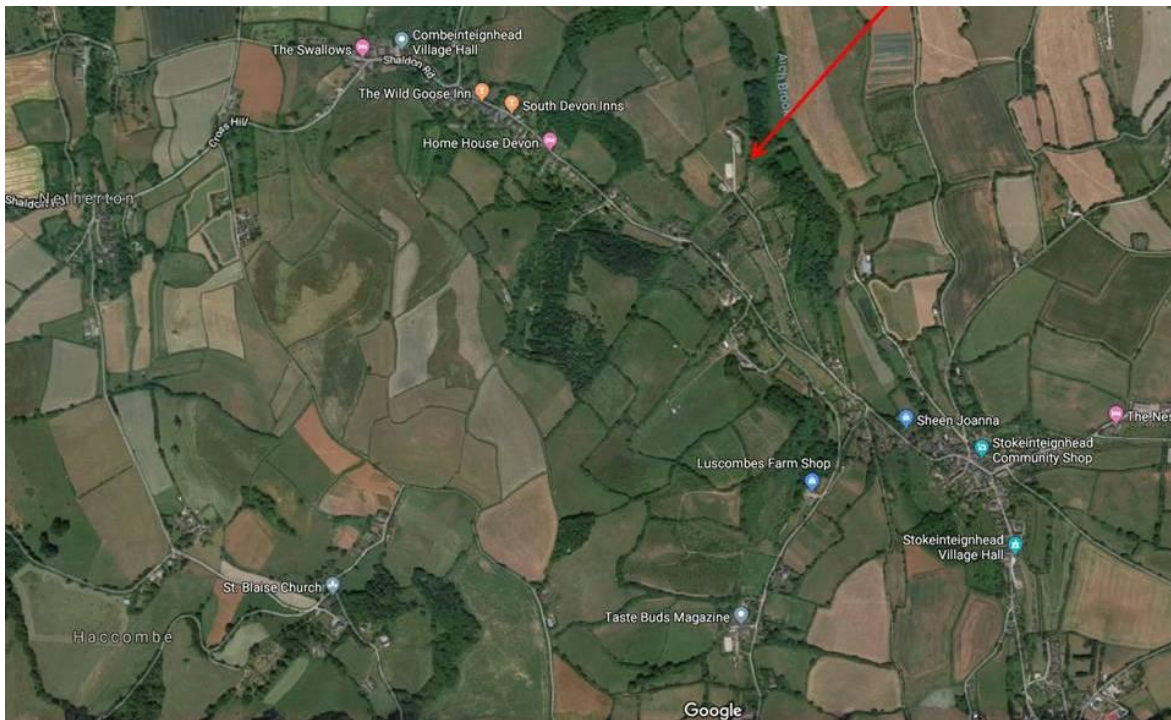
Merryfield, Ridge Road, Maidencombe, TQ1 4TD

Merryfield is almost at the end of the houses, tucked down on the right between Sundowner and Highlands. Please note: SatNavs do not usually recognise the entrance to Ridge Road from A379. We recommend you follow the map.

Please take it SLOWLY at the gate to avoid exiting or incoming class members. You can park on our driveway. Please park quietly to respect our neighbours. Dogs MUST be on a lead until in class in the meadow. Please walk to the right down beside the garage to the bottom of the garden and turn left to the main gate to the Agility meadow. Please try and avoid dogs toileting until in the meadow.



## Map and Directions to the Menage



We occasionally use a fabulous menage in Stokeinteignhead. The entrance is on the right heading towards Combeinteignhead (left coming from Combeinteignhead). The entrance is not signed but has unpainted post and rail fencing. And is closer to Stoke. There is a narrow track up a hill about half a mile to the top and the menage is on the right. Please do not park on the lane as access is required by neighbouring properties.



Post and rail entrance to the track coming from Stokeinteignhead.